



# Radixin Polyclonal Antibody

<b>Catalog No</b>	YP-Ab-03175
<b>Isotype</b>	IgG
<b>Reactivity</b>	Human;Mouse;Rat
<b>Applications</b>	WB;ELISA;IHC
<b>Gene Name</b>	RDX
<b>Protein Name</b>	Radixin
<b>Immunogen</b>	The antiserum was produced against synthesized peptide derived from human RDX. AA range:142-191
<b>Specificity</b>	Radixin Polyclonal Antibody detects endogenous levels of Radixin protein.
<b>Formulation</b>	Liquid in PBS containing 50% glycerol, 0.5% BSA and 0.02% sodium azide.
<b>Source</b>	Polyclonal, Rabbit,IgG
<b>Purification</b>	The antibody was affinity-purified from rabbit antiserum by affinity-chromatography using epitope-specific immunogen.
<b>Dilution</b>	WB 1:500-2000;IHC-p 1:50-300; ELISA 2000-20000
<b>Concentration</b>	1 mg/ml
<b>Purity</b>	≥90%
<b>Storage Stability</b>	-20°C/1 year
<b>Synonyms</b>	RDX; Radixin
<b>Observed Band</b>	69kD
<b>Cell Pathway</b>	Cell membrane; Peripheral membrane protein; Cytoplasmic side. Cytoplasm, cytoskeleton. Cleavage furrow. Cell projection, microvillus . Highly concentrated in the undercoat of the cell-to-cell adherens junction and the cleavage furrow in the interphase and mitotic phase, respectively.
<b>Tissue Specificity</b>	Brain,Hippocampus,Liver,Lung,Testis,Uterus,
<b>Function</b>	disease:Defects in RDX are the cause of non-syndromic sensorineural deafness autosomal recessive type 24 (DFNB24) [MIM:611022]. DFNB24 is a form of sensorineural hearing loss. Sensorineural deafness results from damage to the neural receptors of the inner ear, the nerve pathways to the brain, or the area of the brain that receives sound information.,domain:The N-terminal domain interacts with the C-terminal domain of LAYN. An interdomain interaction between its N-terminal and C-terminal domains inhibits its ability to bind LAYN. In the presence of acidic phospholipids, the interdomain interaction is inhibited and this enhances binding to LAYN.,function:Probably plays a crucial role in the binding of the barbed end of actin filaments to the plasma membrane.,PTM:Phosphorylated by tyrosine-protein kinases.,similarity:Contains 1 FERM domain.,subcellular location:Highly concentrated in the un

**Background**

Radixin is a cytoskeletal protein that may be important in linking actin to the plasma membrane. It is highly similar in sequence to both ezrin and moesin. The radixin gene has been localized by fluorescence in situ hybridization to 11q23. A truncated version representing a pseudogene (RDXP2) was assigned to Xp21.3. Another pseudogene that seemed to lack introns (RDXP1) was mapped to 11p by Southern and PCR analyses. Multiple alternatively spliced transcript variants encoding different isoforms have been found for this gene. [provided by RefSeq, May 2012],

**matters needing attention**

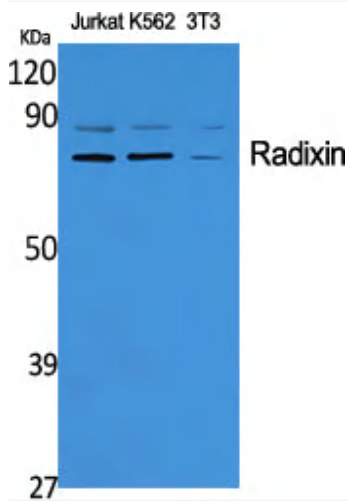
Avoid repeated freezing and thawing!

**Usage suggestions**

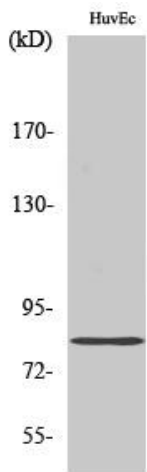
This product can be used in immunological reaction related experiments. For more information, please consult technical personnel.



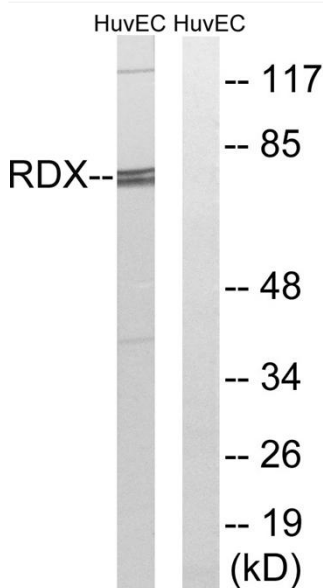
## Products Images



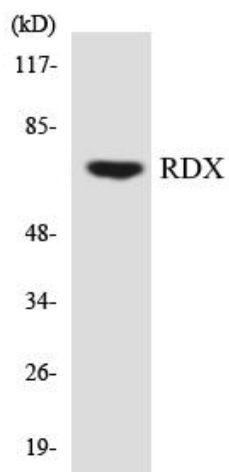
Western Blot analysis of various cells using Radixin Polyclonal Antibody diluted at 1:2000



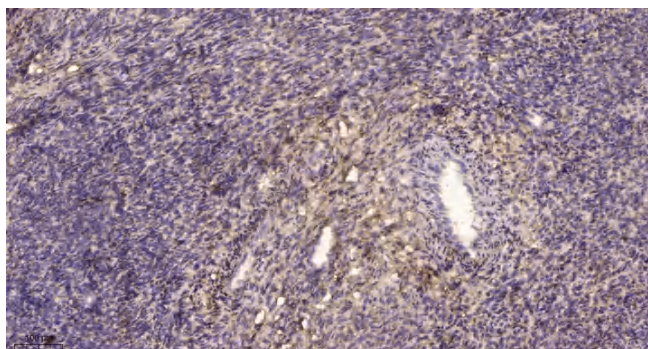
Western Blot analysis of HuvEc cells using Radixin Polyclonal Antibody diluted at 1:2000



Western blot analysis of lysates from HUVEC cells, using RDX Antibody. The lane on the right is blocked with the synthesized peptide.



Western blot analysis of the lysates from HT-29 cells using RDX antibody.



Immunohistochemical analysis of paraffin-embedded human uterus. 1, Antibody was diluted at 1:200(4° overnight). 2, Tris-EDTA,pH9.0 was used for antigen retrieval. 3,Secondary antibody was diluted at 1:200(room temperature, 45min).